



McLaren Grille Installation Guide

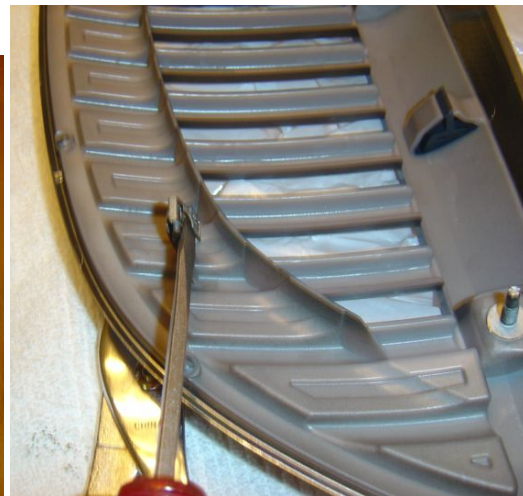
BEFORE PROCEEDING READ THE FOLLOWING DISCLAIMER:

The information contained on this website is anecdotal, is provided by non-professional LS owners, and is not endorsed by LS Concepts. Hopefully readers will find this information useful; however they should use caution and common sense before undertaking any of the procedures described, as working on automobiles may be dangerous. LS Concepts makes no representations of the effect non-professional modifications or servicing may have upon the warranty or safe operation of your vehicle.

This is a very simple installation. You'll need these things:

- Pliers
- Flat Head Screw Driver
- Drill with 5/32" drill bit
- Hair Dryer
- Adhesive or Epoxy

You will need to take your existing grille off your LS by taking the four nuts off. Use a pair of pliers to press the clips on the bottom of the grille and push the grille. Once you have the grille removed lay it on a clean towel. Below you'll see a picture of the back of the grille. Start by removing the four clips from the grille. You may have to use a flat head screwdriver to pull the clips apart. Be careful and don't break them. Just loosen them up a bit and then use a pair of pliers to pull the clip off. Take the rest of the clips off and push them on the posts of the McLaren grille.

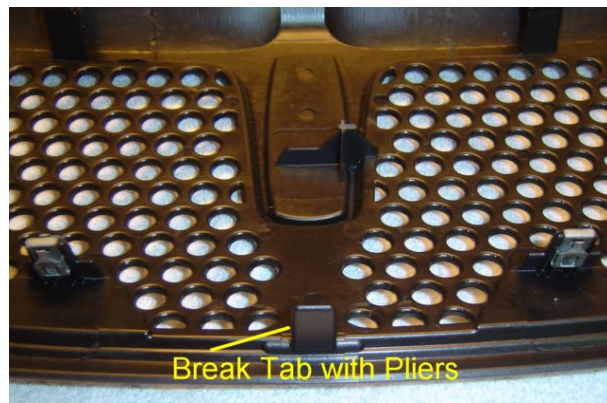




Next take a set of pliers and remove the screw on the post. The screw head is a Torx head and you may use a Torx socket to remove it. I just used a set of pliers to loosen the screw and used my hand to remove it. Now your ready to drill the holes for the screws you removed in the McLaren grille. Use a 5/32" drill bit and drill a hole in the center of the semi-circle hole on the post.

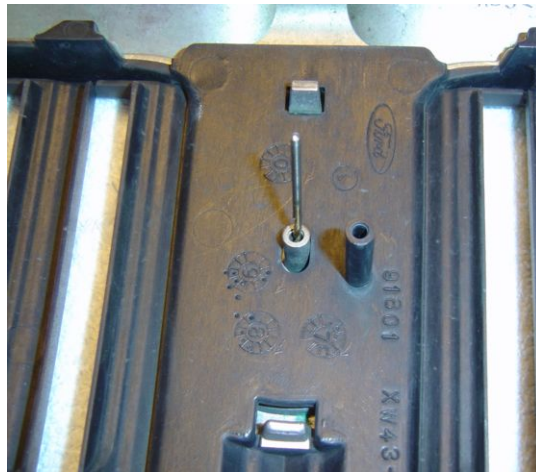


Take the screw for the post and start it with your fingers. Use the pliers or Torx socket to screw the screw in the hole. Repeat this process for the rest of the posts. There is a plastic tab on the bottom back side of the McLaren grille. You don't this so just use your pliers to snap it off.





Now your ready to take existing emblem off your old grille. Take a hair dryer and heat up the emblem. Once it's heated up take a small pen object and poke it through the hole on the back of the grille. The emblem should pop off without any damage to it.



Drill a 5/32" hole in the McLaren Grille emblem area. This is just in case you need to remove the emblem again in the future. This makes the job much easier. You can use just about any type of adhesive to put the emblem on the McLaren Grille. Either epoxy or super glue will work but I just pressed the emblem on with the original sticky part and I've not had any problems with it falling off. Of course if you think it might fall off then use some type of adhesive you feel comfortable with.



Re-install the new McLaren grille on your LS and you're finished!